

Alec D. Ritzell Memorial Education Scholarship

This scholarship was created by Carl B. and Florence E. King Foundation in memory of Alec D. Ritzell. The scholarship benefits Sul Ross State University students who are pursuing either an undergraduate or graduate degree within the Department of Natural Resource Management in either Conservation Biology, Range Management or Wildlife Management. Recipients must maintain a cumulative grade point average of 3.0. **This is an outside application process, contact Sul Ross State University financial aid office for more information.** ***PARTNER OPPORTUNITY FUNDED BY PBAF***



Amy Gardner Memorial "Louis Armstrong" Scholarship

Established in her memory by the family of Amy Gardner, the Amy Gardner Memorial "Louis Armstrong" Scholarship provides scholarships to Andrews High School band students pursuing higher education. ***ONE YEAR SCHOLARSHIP***

Ann & Roy Northern Memorial Scholarship

Created by Scot Northern, in honor and in memory of his parents, the Ann and Roy Northern Memorial Scholarship is awarded to a graduating senior from Midland High School. Scholarships are awarded based on the following criteria:

- financial need,
- exhibition of extracurricular involvement in school and the community,
- exhibition of work ethic through ongoing or summer employment, and
- desire and dedication to succeed in a college environment.

ONE YEAR SCHOLARSHIP



Barbara Yarbrough Scholarship

Established by an anonymous donor, the Barbara Yarbrough Scholarship pays tribute to Barbara as an inspirational educator, tireless volunteer, and community leader. Preference is given to graduating seniors of Midland County public high schools who:

- demonstrate character and leadership by his/her personal behavior and participation in church and civic activities, and
- plan to attend a college or university located in the United States. ***ONE YEAR SCHOLARSHIP***

Bill Mims Memorial Scholarship

The Bill Mims Memorial Scholarship was established by his sister, Dixie, in 2001 to benefit graduates of Midland County high schools. Bill was a Midland High School graduate who was left a paraplegic from a football injury in the 1950s. Despite his disability, he lived a life of service to his community until his death. Scholarships are based on the following criteria:

- graduate of a Midland County high school, and
- will attend an accredited state-funded college or university in the state of Texas.

ONE YEAR SCHOLARSHIP



Blanche Plunkett Memorial Scholarship



Established with donations from her friends and family, the Blanche Plunkett Memorial Scholarship honors this beloved, retired Midland teacher who passed away in 2005. Scholarships provide assistance to graduates of Midland public schools based on the following criteria:

- financial need,
- good citizenship,
- desire and dedication to succeed in a college environment.

RENEWABLE SCHOLARSHIP

Bob & Bobbie Hill Scholarship

Bonnie Brumley established the Bob and Bobbie Hill Scholarship in honor of her mother, Bobbie, and in memory of her father, Bob. The Hills were long-time residents of Martin County. This scholarship is available to graduating Martin County students who will be attending either a junior college or four-year university. ***RENEWABLE SCHOLARSHIP***



Bob & Dorothy Deavenport Scholarship

In December 2003, friends of Bob and Dorothy Deavenport, longtime Martin County citizens and community leaders, established the Bob and Dorothy Deavenport Scholarship to honor the couple's service to Martin County and to the Permian Basin area for over 50 years. Scholarships are awarded to graduating seniors of Grady and Stanton high schools who will attend either a junior college or four-year university. ***RENEWABLE SCHOLARSHIP***

Bowers Family Scholarship

The Bowers Family Scholarship perpetuates Geraldine's legacy of philanthropy and honors her daughters, Candy Sue and Linda Ann. The scholarship is awarded annually to a Midland High School graduate who is pursuing a course of study that results in a degree from a four-year state-funded institution of higher education located in the state of Texas. ***ONE YEAR SCHOLARSHIP***

Brian A. Semple Memorial Scholarship

Created by his family and friends in his memory, the Brian A. Semple Memorial Scholarship benefits Midland County public high school graduates in continuing their education past high school. Scholarship awards based on:

- either recently taken or agrees to take a Defensive Driving Course before the beginning of the fall semester, and
- will attend either Midland College, an accredited public four-year college or university in the state of Texas, an accredited law enforcement academy, or the Texas State Technological Institute. ***RENEWABLE SCHOLARSHIP***



Cindy B. and Raymond "Scooter" Jenkins Scholarship

Established by the Board of Governors in fall 2009, the Cindy B. and Raymond "Scooter" Jenkins Scholarship pays tribute to her 20 years of employment with Permian Basin Area Foundation where Cindy served as Scholarship Administrator. Applicants must be a graduating senior of one of the following county high schools: Andrews, Borden, Crane, Dawson, Ector, Gaines, Glasscock, Howard, Loving, Martin, Midland, Pecos, Reagan, Reeves, Upton, Ward, or Winkler. ***ONE YEAR SCHOLARSHIP***



Clayton Welch Henson Memorial Scholarship

Family and friends created the Clayton Welch Henson Memorial Scholarship in honor and memory of Clayton, who was killed in action while serving our nation in Iraq. Scholarship selection is based on the following criteria:

- a senior who will graduate from Stanton High School, Grady High School or Greenwood High School, and
- attend a junior college or four-year university. ***RENEWABLE SCHOLARSHIP***

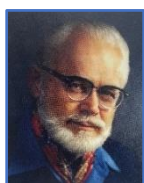
Cole Williams Memorial Scholarship

Cole, a graduate of Hillcrest School in Midland, was eagerly pursuing a degree from Eastern New Mexico University, Roswell, New Mexico, when he tragically died in October 2009. Created by his parents, the Cole Williams Memorial Scholarship honors the special gifts and talents of students with learning challenges and professionals who dedicate their lives to helping children with learning challenges. **This is an outside application process, contact The Burkhart Center for Autism Education & Research at Texas Tech University for more information. *PARTNER OPPORTUNITY FUNDED BY PBAF***



Connell Family Scholarship

The Connell Family Scholarship honors John Connell, a Stanton native who was a master cabinetmaker. Scholarships are awarded to graduating seniors of Martin County. ***RENEWABLE SCHOLARSHIP***



Conrad Dunagan Legacy Scholarship

Intended to benefit top graduates in the Permian Basin, the merit-based Conrad Dunagan Scholarship program was conceived by J. Conrad Dunagan for students pursuing a bachelor's degree from the University of Texas of the Permian Basin. Students must rank in the top 15% of their class and have taken the SAT or ACT to be considered for an award. Please make yourself aware of the GPA requirement to maintain this scholarship once awarded. **This is an outside application process, contact the University of the Permian Basin financial aid office for more information. *PARTNER OPPORTUNITY FUNDED BY PBAF***

Daffy Tabor Memorial Scholarship

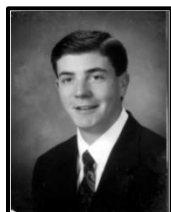


Established in loving memory by her nieces, the Daffy Tabor Memorial Scholarship provides assistance to students with financial need attending Baylor University. Applicants must be a graduating senior from one of the following West Texas counties: Andrews, Borden, Brewster, Crane, Crockett, Dawson, Ector, Gaines, Glasscock, Howard, Jeff Davis, Loving, Martin, Midland, Pecos, Presidio, Reagan, Reeves, Terrell, Upton, Ward or Winkler. ***RENEWABLE SCHOLARSHIP***

Dan Saunders Law Enforcement Education Scholarship

Family and friends established the scholarship to honor this longtime Martin County Sheriff and his wife, Billye. The scholarship assists with law enforcement/criminal justice education for the Martin County Sheriff's Office.

PARTNER OPPORTUNITY FUNDED BY PBAF



Daniel Parker Herd Memorial Scholarship

The Daniel Parker Herd Memorial Scholarship provides financial assistance to Midland County high school graduates with preference given to students planning to attend an educational institution in the state of Texas. Scholarship selection is based on the following criteria:

- financial need,
- good character with leadership qualities, and
- academics.

RENEWABLE SCHOLARSHIP

Danny Ireton Memorial Scholarship

Established by family and friends in honor of Danny Ireton a long-time Martin County resident. Danny was a graduate of Stanton High School, a deacon at First Baptist Church, was on the Stanton School Board, and a proud member of the Stanton Volunteer Fire Department. The Danny Ireton Memorial Scholarship provides financial assistance to graduating seniors of Stanton High School. This scholarship award is based upon the following:

- school &/or community involvement, and
- a GPA of 3.0 on a 4.0 scale.

ONE YEAR SCHOLARSHIP



Daryl Lynn Hunt Memorial Scholarship

Elayne Hunt established the Daryl Lynn Hunt Memorial Scholarship in loving memory of her son who died suddenly of a heart attack in July 2010 at the age 53. Daryl was a football standout for Permian High School, University of Oklahoma, and the Houston Oilers. Scholarship criteria:

- graduating senior of an Odessa, Texas, public school,
- competed as an athlete representing his/her high school in at least one sport, and
- a GPA of 2.5 on a 4.0 scale.

ONE YEAR SCHOLARSHIP

Dawson Geophysical Scholarship

The Dawson Geophysical Scholarship was established on the occasion of the 50th anniversary of the Dawson Geophysical Company in honor of the company and founder, L. Decker Dawson. This scholarship is awarded to students pursuing a degree in the study of geophysics.

RENEWABLE SCHOLARSHIP



Decker Family Scholarship - Texas Christian University

The Decker Family Scholarship, created in 2014 by Lupe and Randal Decker, benefits students attending Texas Christian University. Applicants must be a graduate of Midland High School and enrolled in a course of study that culminates in a bachelor's or advanced degree in one of the following fields:



- Business
- Christian Ministry
- Engineering or Sciences
- Medical Sciences or Services

RENEWABLE SCHOLARSHIP

Decker Family Scholarship - University of Oklahoma

The Decker Family Scholarship, created in 2014 by Lupe and Randal Decker, benefits students attending the University of Oklahoma. Applicants must be a graduate of Midland High School and enrolled in a course of study that culminates in a bachelor's or advanced degree in one of the following fields:



- Business
- Christian Ministry
- Engineering or Sciences
- Medical Sciences or Services

RENEWABLE SCHOLARSHIP

Della & Tom Campbell Family Scholarship

Created by Della Campbell, a "Pink Lady" volunteer for Midland Memorial Hospital (MMH) Auxiliary for 35 years, the Della and Tom Campbell Family Scholarship assists students in health care studies. The scholarship is awarded to students pursuing nursing or healthcare careers at the University of Texas of the Permian Basin, Howard College, Midland College or Odessa College. ***RENEWABLE SCHOLARSHIP***



Dollie Ruth Neal Legacy Scholarship

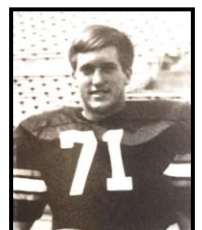
The Dollie Ruth Neal Education Scholarship was created in 2019 to expand the scholarship impact for one-time award recipients at Permian Basin Area Foundation. Recipients will have successfully completed at least one year as full-time students at a college/university or technical school. ***RENEWABLE SCHOLARSHIP***

Donnie Munsell Memorial Scholarship

Established in November 1993 by family and friends, this scholarship provides assistance to graduate athletes of Andrews High School who, although not mandatory, plan to participate in college athletics. Selection is based on the following criteria:

- desire and dedication,
- citizenship,
- academics,
- financial need, and
- sports ability and participation.

ONE YEAR SCHOLARSHIP



Ed Armstrong Scholarship

Ed Armstrong created this scholarship for graduating seniors of Pecos High School. Scholarships are awarded based on the following criteria:

- top 20% of graduating class, and
- pursuing a course of study in either Medical Sciences, Veterinary Medicine, or Prelaw.

RENEWABLE SCHOLARSHIP



Elizabeth Henry Memorial Scholarship

The Elizabeth Henry Memorial Scholarship assists graduates of Legacy High School in pursuing higher education. Scholarships are based on the following criteria:

- preference given to students involved with journalism, yearbook, or photography activities at Legacy High School, and
- must attend an accredited college or university in the state of Texas.

RENEWABLE SCHOLARSHIP

Energy Workforce and Technology Council Scholarship

Established by the former AESC chapter, the Energy Workforce and Technology Council Scholarship benefits children of employees who work for a variety of energy service companies throughout the Permian Basin.

The scholarship application, which is found on Energy Workforce and Technology Council website <https://energyworkforce.org/>, is submitted to the Permian Chapter Scholarship Chairman by the deadline noted on their application.



PARTNER OPPORTUNITY FUNDED BY PBAF

Frank Cowden, Jr. Memorial Scholarship

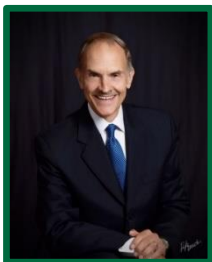
June Cowden created the Frank Cowden, Jr. Memorial Scholarship to honor her husband's legacy. Frank, who passed away in 2006, dedicated his life to family, church, ranching, and community. Recognizing his devotion to the Buffalo Trail Council, Boy Scouts of America, this scholarship is awarded annually to young men of the Council who earn the rank of Eagle Scout. ***RENEWABLE SCHOLARSHIP***



Gene Douglas Hawley Memorial Scholarship

The Gene Douglas Hawley Memorial Scholarship, established by her family and friends in 2008, honors Gene's involvement at St. Luke's Methodist Church. The scholarship is awarded to graduating high school seniors in Midland County who demonstrate character and citizenship reflective of the purposes and commitments of United Methodist Women (UMW), with preference given to active members of St. Luke's Methodist Church.

RENEWABLE SCHOLARSHIP



George Koehl Soli Deo Gloria Scholarship

DiAnn Koehl established this fund in honor of her late husband George Koehl. Mr. Koehl served as Minister of Music and Worship at First Baptist Church of Midland for more than 20 years. This scholarship will be awarded to students who meet the following requirements:

- Texas high school graduates from either a public school, private school, or homeschool,
- demonstrates Christian character and good citizenship by their personal behavior and participation in school, church and civic activities. Such activities may include, but are not limited to, youth fellowship, vacation bible school or day camp leadership, choir or praise team participation, mission trips, and service in support of nonprofit organizations, and
- accepted to a college or university located in the United States. ***RENEWABLE SCHOLARSHIP***



Gordon & Inez Stone Memorial Scholarship

Created by Carolyn Stone in memory of her parents, the Gordon and Inez Stone Memorial Scholarship benefits high school graduates of Martin County who are pursuing a bachelor's or advanced degree in medicine or ancillary medical services including medicine, nursing, audiology, speech pathology, physical therapy, occupational therapy, or dentistry. ***RENEWABLE SCHOLARSHIP***

Grace & Bob King Scholarship

Established by friends of this Odessa couple, the Grace and Bob King Scholarship honors Grace's true spirit of service for more than five decades to the Odessa community. Scholarship preference is given to students who meet one of the following criteria:

- graduate of an Ector County public high school who attends either Odessa College or the University of Texas of the Permian Basin, or
- graduate of an Ector County public high school who will pursue or is pursuing a career in health care through studies at a Texas Tech University Health Sciences Center facility in either Odessa or Midland. ***RENEWABLE SCHOLARSHIP***



Grace Loveless Jones Scholarship

The Grace Loveless Jones Scholarship was established in honor of this longtime Martin County resident, former Martin County schoolteacher, and philanthropist in the field of education. Mrs. Jones generously assisted numerous Martin County students with financial aid during her lifetime. This scholarship is for graduating seniors of Grady and Stanton high schools.

RENEWABLE SCHOLARSHIP



Hamilton Family Texas Tech Petroleum Engineering Scholarship

The Hamilton Family Texas Tech Petroleum Engineering Scholarship was created to benefit college sophomore students pursuing degrees in petroleum engineering at Texas Tech University. **This will be an outside application process beginning fall 2024, please contact Texas Tech financial aid office for more information.**

PARTNER OPPORTUNITY FUNDED BY PBAF

J. Alex & Ruby Henson Haggard Scholarship

Ruby Henson Haggard established the J. Alex and Ruby Henson Haggard Scholarship to honor the legacy of her husband, Alex, who died in 2002. Ruby, a lifelong Martin County resident, passed away in 2009. Scholarships are based on the following criteria:

- graduating high school senior of Stanton or Grady High School,
- will attend a four-year Texas public institution of higher education, and
- preference given to those pursuing a degree in either Agriculture/Ranch Management, Architecture, Librarianship, Historic Preservation or Landscape Architecture. ***ONE YEAR SCHOLARSHIP***



J. M. & Willa Jo Yater Memorial Scholarship

The J. M. & Willa Jo Yater Memorial Scholarship was created by friends and family in honor and in memory of these longtime educators in Martin County schools. The scholarship is awarded to graduates of Martin County high schools who demonstrate a high level of success while striving to reach their educational goals. ***RENEWABLE SCHOLARSHIP***



Jacob Power Fighting Rebel Memorial Scholarship



Created by his family and friends, this scholarship honors Jacob's life as a young man who exemplified character, faith, kindness, and respect. A graduate of Lee High School, Jacob was fatally injured in a two-vehicle accident in July 2012. This scholarship provides financial assistance to graduates at Legacy High School possessing these characteristics:

- achieved academic success by graduating in the top 40 percent of the graduating senior class,
- lettered in football while in high school,
- demonstrates Christian character and good citizenship by their personal behavior and participation in church and civic activities, and
- accepted to a college or university located in the United States.

This scholarship is awarded at the end of each fall semester so it may be announced at the annual Football Banquet. Please see the Legacy High School football staff for more information. *ONE YEAR SCHOLARSHIP*****

Jal Public School Foundation for Excellence and Education Scholarship



Jal Public School Foundation created this scholarship to support the valedictorian and salutatorian of Jal ISD in furthering their education. **This is an outside application process, check with the school counselor for more information.**

PARTNER OPPORTUNITY FUNDED BY PBAF

James L. & Judith A. Roberts Scholarship

Created by former Fire Chief James Roberts and his wife, Judy, this scholarship provides benefits for graduating seniors from Midland County public high schools. To be eligible for consideration, students must attend a public college or university in the State of Texas, demonstrate school involvement and community service, and be a dependent child of:

- a City of Midland employee, with preference given to an employee of the Midland Fire Department, or
- a retired employee of the City of Midland as evidenced by the retiree being entitled to receive retirement benefits from Texas Municipal Retirement System, or Firemen's Retirement and Relief Fund.

RENEWABLE SCHOLARSHIP

Jeb Worthy Education Scholarship

Created by an anonymous donor in 1996, the Jeb Worthy Education Scholarship assists deserving students accepted into the Howard College vocational or registered nursing program. **This is an outside application process, contact Howard College financial aid office for more information.**

PARTNER OPPORTUNITY FUNDED BY PBAF



Jimmie & Dorothy Mashburn Scholarship

Jimmie and Dorothy created the Jimmie and Dorothy Davis Mashburn Scholarship to fund higher educational opportunities for Stanton students. They wanted this opportunity to provide recipients a valuable life experience, and for recipients to then make productive contributions to society. This scholarship is available to graduating seniors of Stanton High School with preference given to students attending Midland College or a technical school. ***RENEWABLE SCHOLARSHIP***

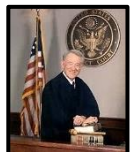


Joe M. Parsley Engineering Scholarship

Midland independent oil operator, Joe M. Parsley, created the Joe M. Parsley Engineering Scholarship for students enrolled in The University of Texas at Austin, Cockrell School of Engineering. To be considered for this scholarship, students should complete the scholarship section of the admission application for The University of Texas at Austin through ApplyTexas by the deadline, marking Engineering as the first-choice major. **This is an outside application process, contact The University of Texas at Austin financial aid office for further assistance.** *PARTNER OPPORTUNITY FUNDED BY PBAF*

Johnny Peugh Memorial Scholarship

The Johnny Peugh Memorial Scholarship perpetuates the legacy of Johnny Peugh, a graduate of Sands High School and Texas A&M University. Johnny coached basketball at Grady and Sands high schools for 13 years. Scholarship awards are provided to graduating seniors of Grady High School. *ONE YEAR SCHOLARSHIP*



Judge Lucius Bunton Memorial Law Scholarship

Senior U.S. District Judge Lucius Bunton served as a federal judge from 1979 until his death in early 2001. Established by his family and friends, the Judge Lucius Bunton Memorial Law Scholarship is awarded to students pursuing a degree in law at Texas Tech University. **This will be an outside application process beginning fall 2025, contact Texas Tech University financial aid office for more information.** *PARTNER OPPORTUNITY FUNDED BY PBAF*

Junior League of Midland Morrow GEM Scholarship



The Junior League of Midland Morrow GEM Scholarship honors Katy and Paul Morrow and active Junior League members' dedication to community service. This scholarship will be awarded based on the following criteria:

- a senior graduating from a Midland County high school, and
- has shown dedication to his/her community, as demonstrated through active volunteer service.

ONE YEAR SCHOLARSHIP

Kristen Corbin Memorial Scholarship

Established by her family and friends, the Kristen Corbin Memorial Scholarship provides assistance to graduating Andrews High School seniors who participate in athletics. A dedicated student and star athlete, Kristen lettered in cross country, softball, and track and excelled in her first love, basketball. She was active in her church youth group and her community. Selection is based on the following criteria:

- U.S. citizenship,
- good character,
- financial need, and
- academic capacity and commitment to succeed in a college environment.

ONE YEAR SCHOLARSHIP



Lamesa School Golden Tornado Jubilee Scholarship

Established by the Golden Tornado Jubilee Committee, the Lamesa Golden Tornado Jubilee Scholarship provides scholarships to graduating seniors of Lamesa High School. *ONE YEAR SCHOLARSHIP*



Laura Catherine Van Gundy Young Memorial Scholarship

Established in 2012 in loving memory of Mrs. Young by her grandson and his wife, Mr. and Mrs. Randal Decker, the Laura Catherine Van Gundy Young Memorial Scholarship honors her legacy of care and concern for others. **This is an outside application process through Brite Divinity School, to learn more visit <https://www.brite.edu/admissions>.** *PARTNER OPPORTUNITY FUNDED BY PBAF*



Les Honeyman Memorial Scholarship

LaNell Honeyman established the Les Honeyman Memorial Scholarship in honor of her late husband Les Honeyman. Mr. Honeyman was a Vietnam veteran where he received the Army Commendation Medal and the Bronze Star for his service. He earned his master's degree in Geology in 1973 at the University of North Dakota then began his 41-year career in the oil business. Scholarships are awarded to North Dakota resident students pursuing either an undergraduate or graduate degree in the field of geology at the University of North Dakota in Grand Forks.

This is an outside application process, contact University of North Dakota in Grand Forks financial aid office for more information. *PARTNER OPPORTUNITY FUNDED BY PBAF*

Madhuri Vindhya Kumar Memorial Scholarship

Established by her parents and husband in 2009, the Madhuri Vindhya Kumar Memorial Scholarship honors Madhuri's life and passion for learning. Madhuri, who was born in Hyderabad, India, was a graduate of Permian High School, Baylor University, and St. Mary's Law School in San Antonio.



Preference will be given to applicants who possess the following characteristics:

- originating from India, legally residing in the United States,
- graduate of a public high school located in Ector County, Texas, and
- a female student pursuing a professional career in medicine, law, or education and enrolled in a college or university in Texas. ***RENEWABLE SCHOLARSHIP***

Madhuri Vindhya Kumar Memorial Nursing Scholarship

Established in 2009 by her parents and husband, the Madhuri Vindhya Kumar Memorial Nursing Scholarship pays tribute to Madhuri's deep belief that education empowers students to achieve their dreams. Applicant requirements:

- graduate of a public high school located in Ector County, Texas, and
- a student who has been admitted as a first-year student in the Nursing Program at UTPB.

This is an outside application process, contact the University of the Permian Basin financial aid office for more information. *PARTNER OPPORTUNITY FUNDED BY PBAF*

Marie Hall Scholarship

Marie Hall, a native of Big Spring, created the Marie Hall Scholarship for the benefit of West Texas residents who attend selected area colleges. Awards are dependent on need and circumstances.

Candidates must have either: (1) graduated from a high school located in one of the following counties, or (2) maintained a permanent residence for the immediate past five years in one of the following counties: Andrews, Borden, Cochran, Coke, Crane, Dawson, Ector, Gaines, Garza, Glasscock, Hockley, Howard, Kent, Loving, Lynn, Martin, Midland, Mitchell, Pecos, Reagan, Reeves, Scurry, Sterling, Upton, Ward, Winkler or Yoakum. Selected recipients must attend as a full-time student one of the following schools:

- Angelo State University, San Angelo
- Howard College, Big Spring
- Midland College, Midland
- Odessa College, Odessa
- Sul Ross University, Alpine
- Texas Tech University, Lubbock
- Texas Tech University Health Sciences Center, Midland, Odessa or Lubbock
- University of Texas of the Permian Basin, Odessa

RENEWABLE SCHOLARSHIP



Mary Frances "Chan" Driscoll Kappa Alpha Theta Scholarship



Hank Paup and Ted Paup chose to remember their mother by establishing the Mary Frances "Chan" Driscoll Kappa Alpha Theta Scholarship in her honor. Chan was a beloved member of the Midland community, having called it home for more than 60 years. A graduate of the University of Texas, where she began her lifelong association with the Kappa Alpha Theta Sorority, she later served twice as president of the Midland Theta alumnae chapter. Chan was active in numerous community endeavors including Junior League of Midland, Midland-Odessa Symphony, First Presbyterian Church, and Midland Panhellenic Association.

Applicant must be a graduate of a public or private high school located in Midland County, Texas, and enrolled at one of the following Texas schools:

- Baylor University
- Southern Methodist University
- Texas A&M University
- Texas Christian University
- Texas Tech University
- University of Texas at Austin
- University of Texas at Dallas

Applicant must maintain a 2.5 GPA and be an active member of Kappa Alpha Theta Sorority as a returning sophomore, junior or senior; no returning 5th-year students may apply. ***RENEWABLE SCHOLARSHIP***

Mary Spannaus Medical Education Memorial Scholarship

The Mary Spannaus Medical Education Memorial Scholarship, established by her family and friends, provides scholarships to nursing students at Midland College. **This is an outside application process, contact Midland College's financial aid office for more information.**

PARTNER OPPORTUNITY FUNDED BY PBAF



Mashburn Legacy Scholarship

The Mashburn Legacy Scholarship provides financial support for Martin County graduates who have successfully completed at least one year as a full-time student at a Texas state college/university or technical school. ***RENEWABLE SCHOLARSHIP***



Memorial Christian Church Legacy Scholarship

In 2016, Memorial Christian Church created this permanent charitable fund for the purpose of assisting organizations which serve people through Christian ministries and missions. Brite Divinity School was chosen as an organization to receive funds for student scholarships with a preference given to Permian Basin residents. **This is an outside application process through Brite Divinity School, to learn more visit <https://www.brite.edu/admissions>. *PARTNER OPPORTUNITY FUNDED BY PBAF***

Midland Municipal Employee Scholarship

Created by employees contributing to the Midland Municipal Employee Scholarship Fund, this scholarship benefits children of City of Midland employees. Applications are available from City Hall and City of Midland's intranet. **This is an outside application process, contact the City Secretary's Office for more information. *PARTNER OPPORTUNITY***

Nancy Jo Mims Geers Memorial Scholarship



Mary and James W. Mims created the Nancy Jo Mims Geers Memorial Scholarship in memory of their daughter. Nancy Jo was a professional occupational therapist who devoted her life to assisting patients realize their full capacity. Scholarship selection is based on the following criteria:

- resident of Midland County,
- pursuing education and career service in the field of Occupational Therapy,
- practices good citizenship,
- demonstrates desire and capacity to succeed in an academic environment toward fulfillment of requirements for a college degree.

RENEWABLE SCHOLARSHIP

Nettie Millhollon Scholarship

Created in 2014 by the Nettie Millhollon Educational Trust, the Nettie Millhollon Scholarship benefits residents of Martin County. Potential recipients must be a permanent resident of Martin County at the time of their initial application and pursuing a course of study that culminates in a bachelor's or advanced degree. ***RENEWABLE SCHOLARSHIP***



Noah Fishman Memorial Scholarship

Lyn Fishman established the Noah Fishman Memorial Scholarship in honor of her late husband, Noah Fishman. Mr. Fishman spent his years as a geologist, first for the Zambian government and then in Midland, Texas. He was active in many organizations such as the West Texas Geological Society and the American Association of Petroleum Geologists. This scholarship will support students looking to pursue a degree in Earth Sciences at the University of the Permian Basin. **This is an outside application process, contact the University of the Permian Basin financial aid office for more information. *PARTNER OPPORTUNITY FUNDED BY PBAF***

Olga T. Banks Scholarship

This scholarship was established by Olga T. Banks, a retired Midland teacher, who passed away in 2018 at the age of 102. Olga did not have children of her own, but strongly impacted the lives of her students. She was a home economics teacher at San Jacinto Junior High, Midland High and Lee High schools. This scholarship is for graduates of Midland High School, Lee High School and Midland College students. This award is based on the following:

- financial need,
- good citizenship,
- desire and dedication to succeed in a college environment.

RENEWABLE SCHOLARSHIP

Patricia Cobb Memorial Scholarship

Family and friends created the Patricia Cobb Memorial Scholarship in her honor for graduates of Midland High School active in athletics. Ms. Cobb was a schoolteacher and guidance counselor in the Midland Independent School District for 30 years until her retirement. The scholarship award is based on the following criteria:

- academics,
- three-year participation in MHS athletics,
- desire, dedication, leadership, and
- financial need.

RENEWABLE SCHOLARSHIP

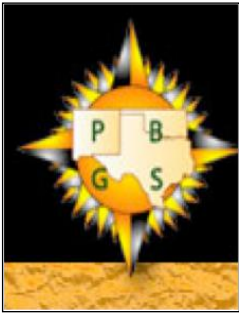


Patrick Wayland Memorial Scholarship

Created by his family and friends, the Patrick Wayland Memorial Scholarship honors Patrick's life as an outstanding scholar, athlete, Marine Corps officer, and person of faith and character. A graduate of Midland High School and the U. S. Naval Academy, Patrick sustained injuries in a military training exercise from which he was unable to recover. This scholarship provides financial assistance to graduating seniors of Midland High School possessing these characteristics:

- achieved academic excellence by graduating in the top 10 percent of their graduating class,
- lettered in at least one sport while in high school,
- demonstrates Christian character and good citizenship by personal behavior and participation in church and civic activities
- accepted to a college or university located in the United States.

RENEWABLE SCHOLARSHIP



Permian Basin Geophysical Society David Liebmann Memorial Scholarship

David Liebmann was a highly regarded geophysicist for Chevron and its predecessor companies for over 35 years. Outside of work, David was active in promoting interest and education in the sciences of geophysics and geology as a leader in the Permian Basin Geophysical Society. Scholarships are awarded to students pursuing a degree in the field of geophysics, or the other geosciences, with preference given to students from the Permian Basin. ***RENEWABLE SCHOLARSHIP***

Permian Basin Geophysical Society Scholarship

Established in honor of the 75th anniversary of the Society of Exploration Geophysicists, the parent society, the Permian Basin Geophysical Society Scholarship benefits students pursuing a degree in the field of geophysics, or other geosciences, with preference given to students from the Permian Basin. ***RENEWABLE SCHOLARSHIP***

Permian Basin Restaurant Association Scholarship

The Permian Basin Restaurant Association Scholarship was established for the pursuit of higher education and vocational opportunities in Culinary Arts. Scholarship awards will be based on the following criteria:

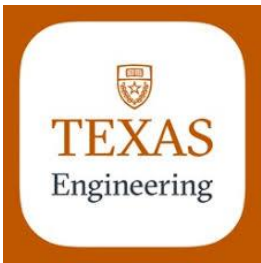
- applicants must have earned a high school diploma in one of the following counties: Andrews, Borden, Brewster, Crane, Crockett, Dawson, Ector, Gaines, Glasscock, Howard, Jeff Davis, Loving, Martin, Midland, Pecos, Presidio, Reagan, Reeves, Terrell, Upton, Ward, Winkler.
- applicants must be pursuing academic studies or vocational training in either Hospitality Management, Restaurant Management, Food and Beverage Management, or Culinary Arts.

RENEWABLE SCHOLARSHIP



Permian Basin Scholarship for Petroleum and Mechanical Engineering

Longtime Midland resident Bill Wallace established the Permian Basin Scholarship for Petroleum and Mechanical Engineering for undergraduate students at the University of Texas at Austin, Cockrell School of Engineering. Open to students in Petroleum and Mechanical Engineering; applicants will be graduates of high schools located in the following counties: Andrews, Borden, Crane, Dawson, Ector, Gaines, Glasscock, Howard, Loving, Martin, Midland, Pecos, Reeves, Terrell, Upton, Ward or Winkler.



This scholarship is awarded on the following criteria:

- capacity to succeed in academics,
- acceptance to the University of Texas at Austin, Cockrell School of Engineering,
- interest in pursuing a professional career in the field of petroleum or mechanical engineering, and
- demonstrates commitment to Christian principles and lifestyle.

To be considered for this scholarship, students should complete the scholarship section of the admission application for The University of Texas at Austin through ApplyTexas by the deadline, marking Engineering as the first-choice major. **This is an outside application process, contact The University of Texas at Austin financial aid office if you need further assistance.** ***PARTNER OPPORTUNITY FUNDED BY PBAF***

P Permian High School Class of 2013 Scholarship

Established by Permian High School's class of 2013, this scholarship is awarded to graduating seniors of Permian High School, Odessa, Texas. ***RENEWABLE SCHOLARSHIP***

Rankin Community Education Scholarship



The Rankin Community Education Scholarship, created by community residents, supports education opportunities for citizens served by Rankin Independent School District and for RHS graduates pursuing a college education or vocational training.

To be considered for this scholarship, complete the required Rankin Community Education Endowment application, which is available from the Rankin High School counselor. ***ONE YEAR SCHOLARSHIP***

Riddle Family Education Scholarship

In 2010, Jane and Ray Riddle established the Riddle Family Education Scholarship to assist students of Native American origin who attend Lewis-Clark State College in Lewiston, Idaho. The scholarship honors the Riddles' two daughters, Nancy Dowling and Jann Hill, and their life-long commitment to education. **This is an outside application process through Lewis-Clark State College, for more information contact the financial aid office.** ***PARTNER OPPORTUNITY FUNDED BY PBAF***



Stanton Buffalo Booster Club Scholarship

Created in 2019 by the Stanton Buffalo Booster Club, the Stanton Buffalo Booster Club Scholarship provides financial assistance to graduating seniors from Stanton High School. Scholarships are awarded based on the following criteria:



- 3.0 GPA on a 4.0 scale,
- parent is an active member of the Stanton Buffalo Booster Club, and
- accepted to a college or university located in the United States; or
- accepted to accredited technical/vocational school.

ONE YEAR SCHOLARSHIP



Stephen Neace Memorial Scholarship

Family and friends of Stephen created the Stephen Neace Memorial Scholarship in 2008. Stephen was a graduate of Monahans High School and the University of Texas of the Permian Basin. Stephen was working as a scientist at the time of his death.

Scholarship awards based on the following criteria:

- graduating senior from Monahans High School,
- will attend the University of Texas of the Permian Basin, with preference given to those majoring in biology,
- demonstrates financial need, and
- exhibits good citizenship and the desire and dedication to succeed in a college environment.

ONE YEAR SCHOLARSHIP



Ted and Von Dean Lawson Memorial Scholarship

Originally established as the Ted Lawson Memorial Scholarship by Von Dean Lawson, this scholarship honors Mr. Lawson, who was a recognized leader in the Permian Basin oil and gas industry. The scholarship was later renamed to also honor Von Dean, an elementary school teacher for more than 30 years, who passed away in 2012. The scholarship benefits Sul Ross State University students who are pursuing a bachelor's degree. Scholarship awards are based on the following criteria:

- attendance at Sul Ross State University pursuing a bachelor's degree,
- financial need, with
- desire and dedication to succeed in a college environment.

This is an outside application process, contact Sul Ross State University financial aid office for more information.

PARTNER OPPORTUNITY FUNDED BY PBAF

Ted G. Roden Memorial Scholarship of Standard Sales Company, L.P.

Established in honor of its company founder, the Ted G. Roden Memorial Scholarship of Standard Sales Company, L.P. is open to full-time company employees and their spouse or qualifying child (as determined by IRS criteria). To be considered, an applicant must be a high school senior (or graduate) and enroll at a two or four-year academic institution that results in an associate degree, bachelor's degree or post-graduate degree. Attendance at a state-funded technical college is permissible if the course of study results in an associate degree. Be aware:

- Full-time employees are permitted to enroll in a minimum course load of 6 hours; dependents (spouses and qualifying children) are required to enroll as full-time students.
- Scholarships are awarded based on financial need, academic performance, participation in extracurricular activities, potential to succeed in a college environment, and good citizenship.

RENEWABLE SCHOLARSHIP



Thelma Windham Scholarship

Thelma Bayless Windham, a longtime resident of McCamey and Upton County, is honored by her family with a scholarship in her name. The Thelma Windham Scholarship provides financial assistance to average or above average graduates of Upton County high schools for continued education. Scholarship awards are based on the following:

- graduate of an Upton County high school,
- will attend an accredited college or university in the state of Texas, and
- financial need.

ONE YEAR SCHOLARSHIP

Todd Shplet Memorial Scholarship

Friends and family established the Todd Shplet Memorial Scholarship following his death in 2003. Scholarship awards are based on the following criteria:

- applicant must be a graduating senior from a Midland County, Texas, high school,
- must have maintained a minimum 2.5 grade point average based on a 4.0 grade point average scale,
- financial need,
- good citizenship, with
- desire and dedication to succeed in a college environment.

RENEWABLE SCHOLARSHIP



Tommy Norwood Memorial Scholarship

Established by his family, the Tommy Norwood Memorial Scholarship provides financial assistance to Midland High School graduates in continuing their education. This scholarship award is based on the following criteria:

- graduate of Midland High School with a minimum overall 2.75 GPA,
- participation in high school athletics,
- applicant's life should reflect an interest in and pursuit of outdoor activities,
- extracurricular involvement in school, church, and community, with
- no record of arrest for a felony or Class A or Class B misdemeanor.

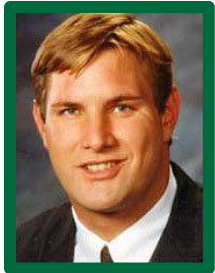
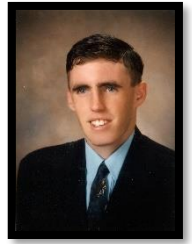
ONE YEAR SCHOLARSHIP

Tyler Berry Memorial Soccer Scholarship

Created by family and friends, the Tyler Berry Memorial Soccer Scholarship provides financial assistance to Midland High School graduates. A scholarship is awarded to one female and one male student, based on the following criteria:

- participation on the Midland High School soccer team from the beginning of the season,
- minimum 3.0 overall GPA on 4.0 scale in high school,
- financial need, and
- extracurricular activity involvement in school, church, and community.

ONE YEAR SCHOLARSHIP



Wally Kleine Bulldog Excel Scholarship

Established by former Midland High School, Notre Dame, and Washington Redskins football player Wally Kleine, the Bulldog Excel Scholarship provides financial assistance to scholar/athlete graduates of Midland High School. In 2014, this scholarship was renamed the Wally Kleine Bulldog Excel Scholarship in loving remembrance of Wally and his legacy of charitable giving. A scholarship award is based on the following criteria:

- financial need,
- good character with leadership qualities,
- academics, and
- sports ability with three-year participation in MHS athletics.

ONE YEAR SCHOLARSHIP

Ward County Community Scholarship

Benefiting the people of Ward County, the Ward County Community Scholarship provides assistance to deserving Ward County graduating seniors who are pursuing higher education. ***ONE YEAR SCHOLARSHIP***



West Texas Legacy Scholarship

The West Texas Legacy Scholarship provides financial support for graduating high school seniors from any of the counties served by Permian Basin Area Foundation. ***RENEWABLE SCHOLARSHIP***

Wes-Tex Telephone Cooperative Scholarship

Wes-Tex Telephone Cooperative, Inc., created this scholarship for a graduating senior from each of the following school districts:

Big Spring ISD, Borden County ISD, Coahoma ISD, Forsan ISD, Glasscock ISD, Grady ISD, Greenwood ISD, Reagan County ISD, Sands ISD, and Stanton ISD. The scholarship is limited to the first year of college attendance and must be used within a year of being awarded. Recipients are selected based on the following criteria:



- good citizenship,
- desire for advanced education,
- potential for success in a college environment, and
- financial need.

ONE YEAR SCHOLARSHIP